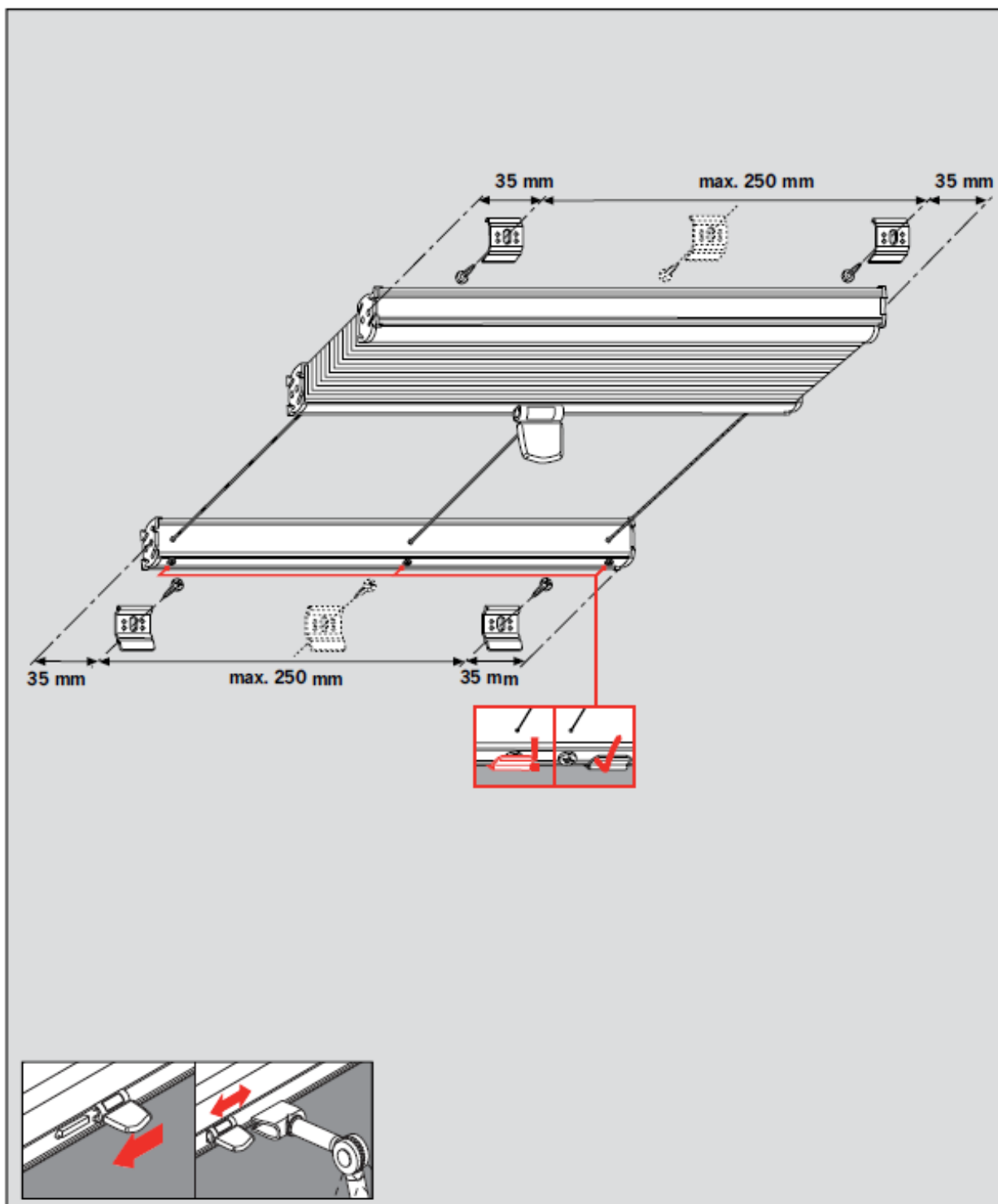
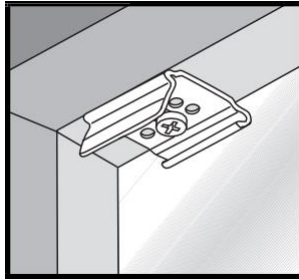


## Plisse „Typ PL 11“

**Dôležité! Tento návod je platný súčasne s inštrukciami na údržbu!**

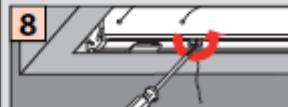
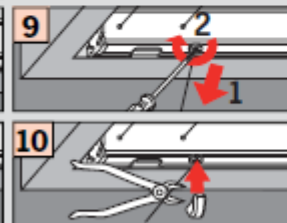
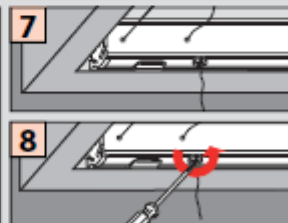
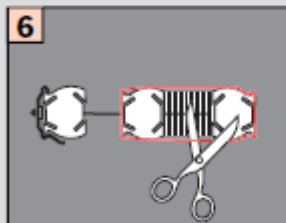
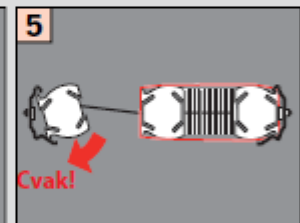
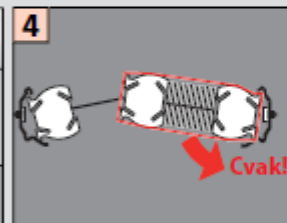
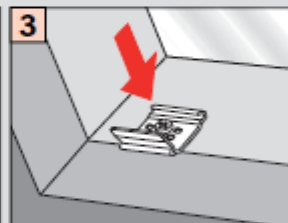
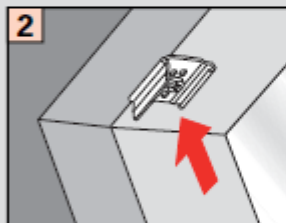
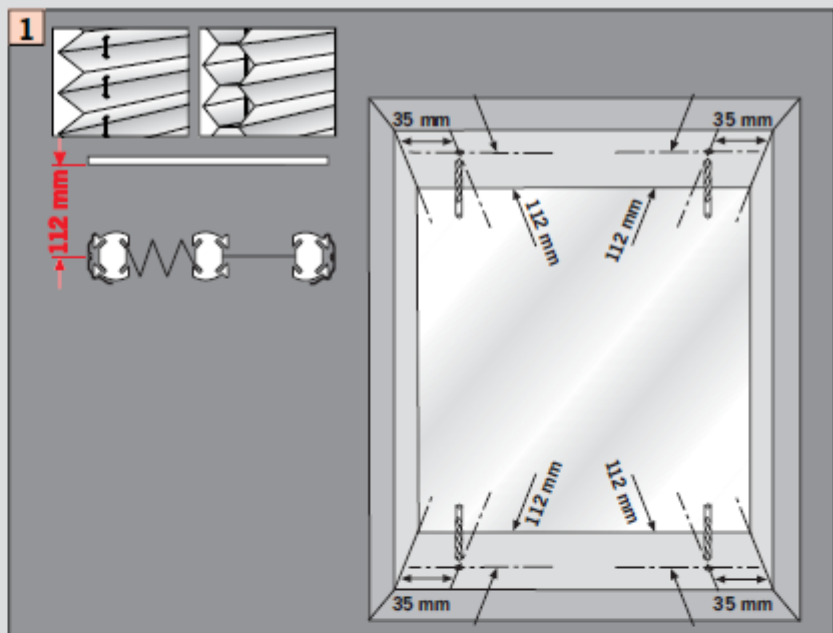




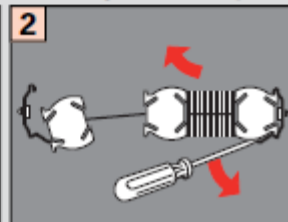
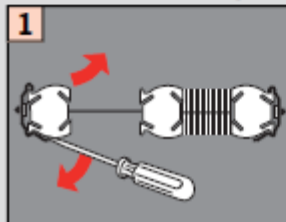
**Montáž medzi zasklievacie lišty**

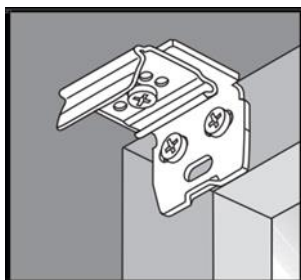


Montáž • Montage  
Fitting • Montaggio  
Montaż • Монтаж



Demontáž • Demontage • Disassembly • Démontage • Smontaggio • Demontaž • Демонтаж

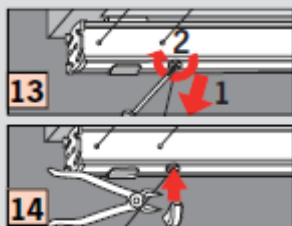
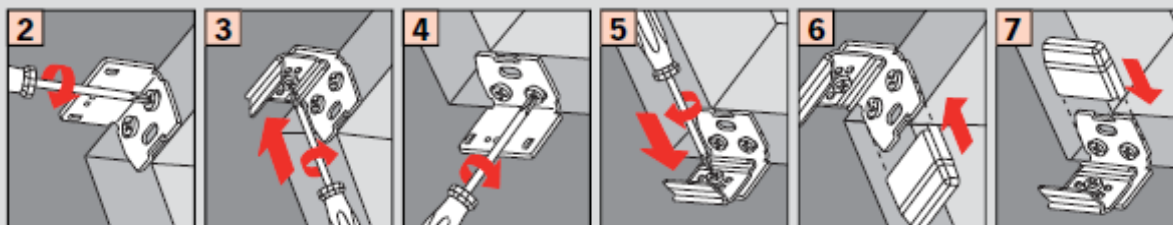
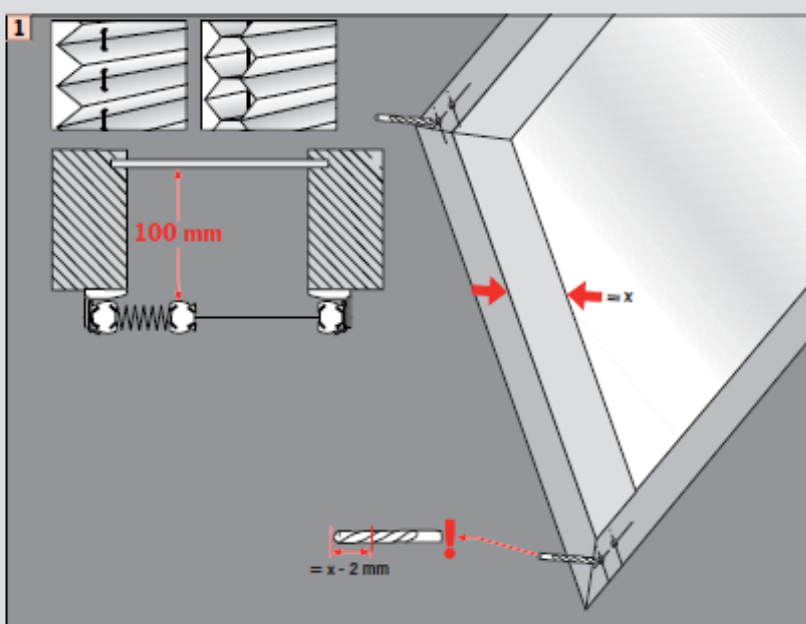
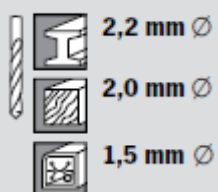




**Montáž na rám okna  
(pomocou stenového uholníka)**



Montáž • Montage  
Fitting • Montaggio  
Montaż • Монтаж



Demontáž • Demontage • Disassembly • Démontage  
Smontaggio • Demontaj • Демонтаж

